

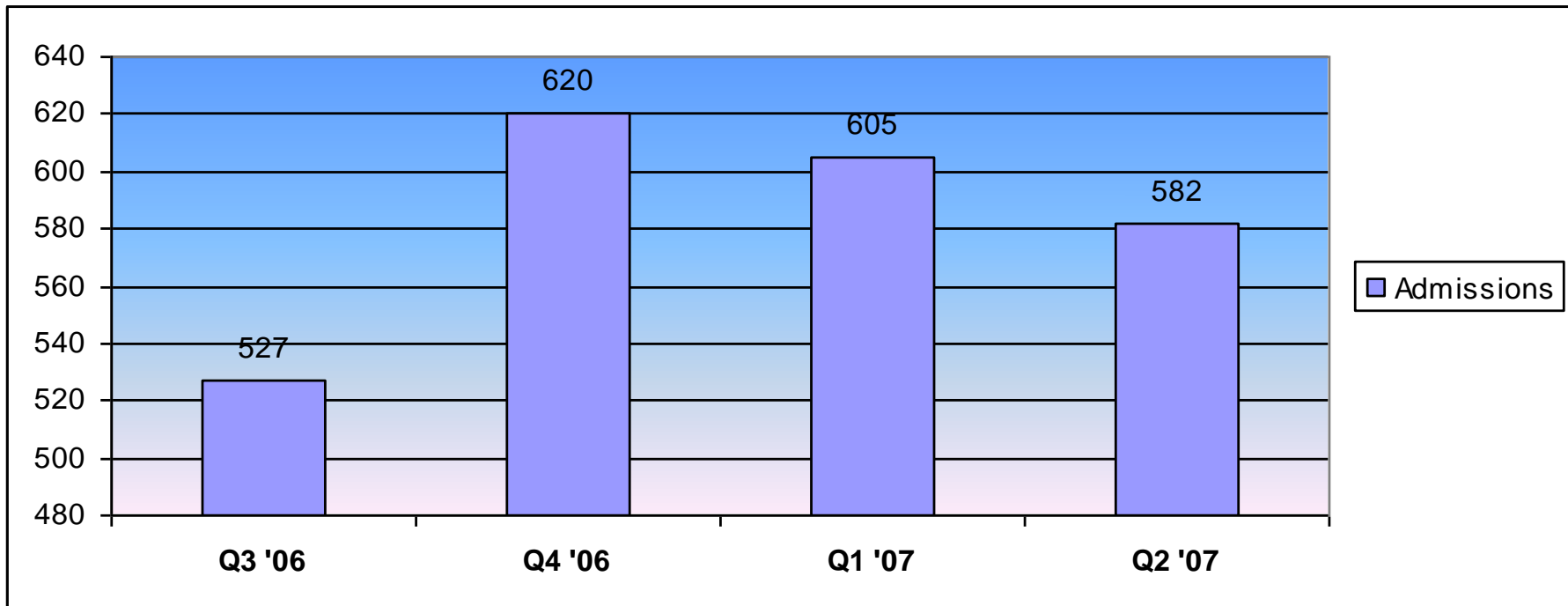


Report to the Quality & Access
Sub-Committee
October 19, 2007

UTILIZATION DATA

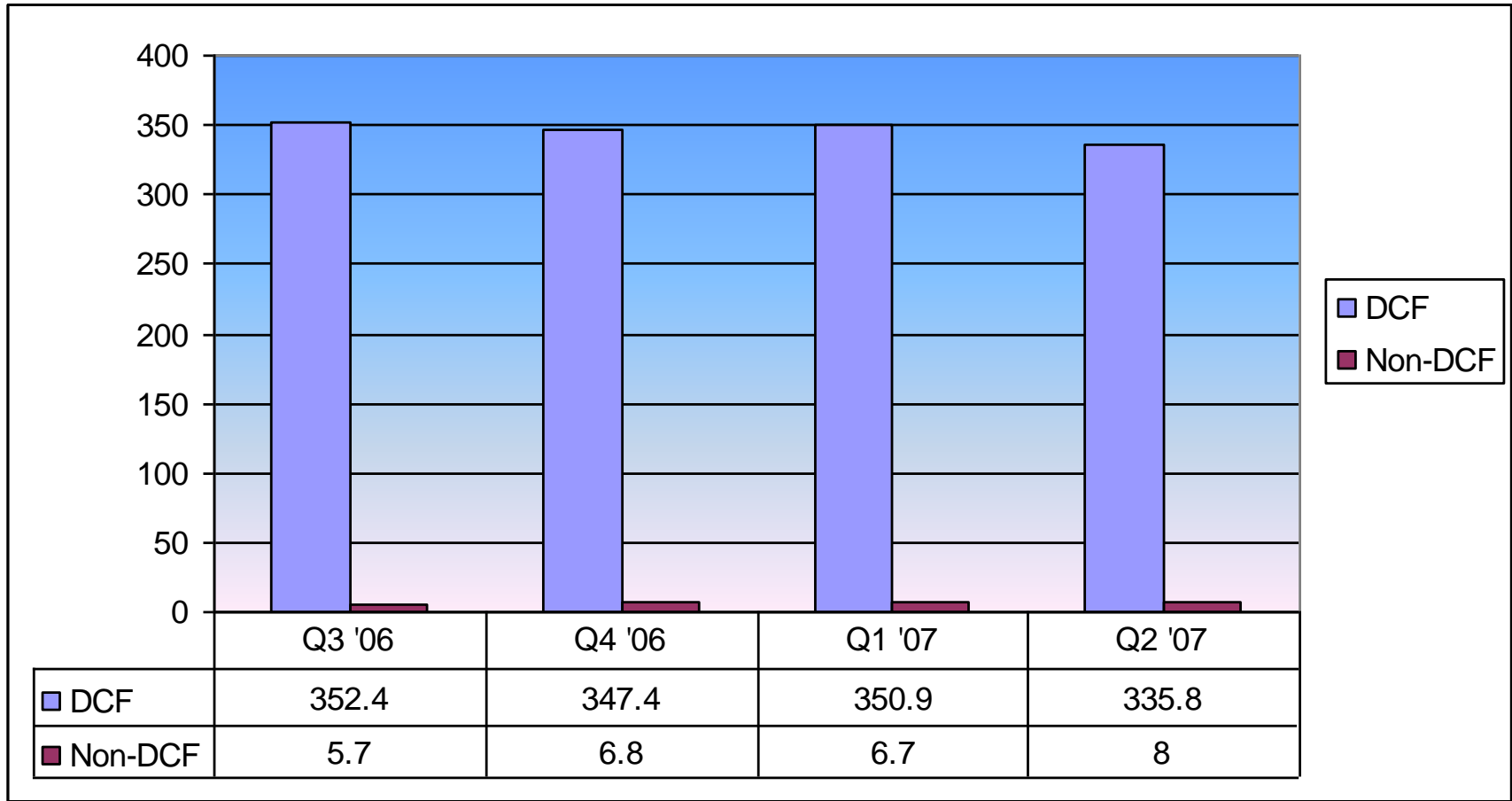
Count of Admissions for all Children 0-18

IPF, IPM and OBS

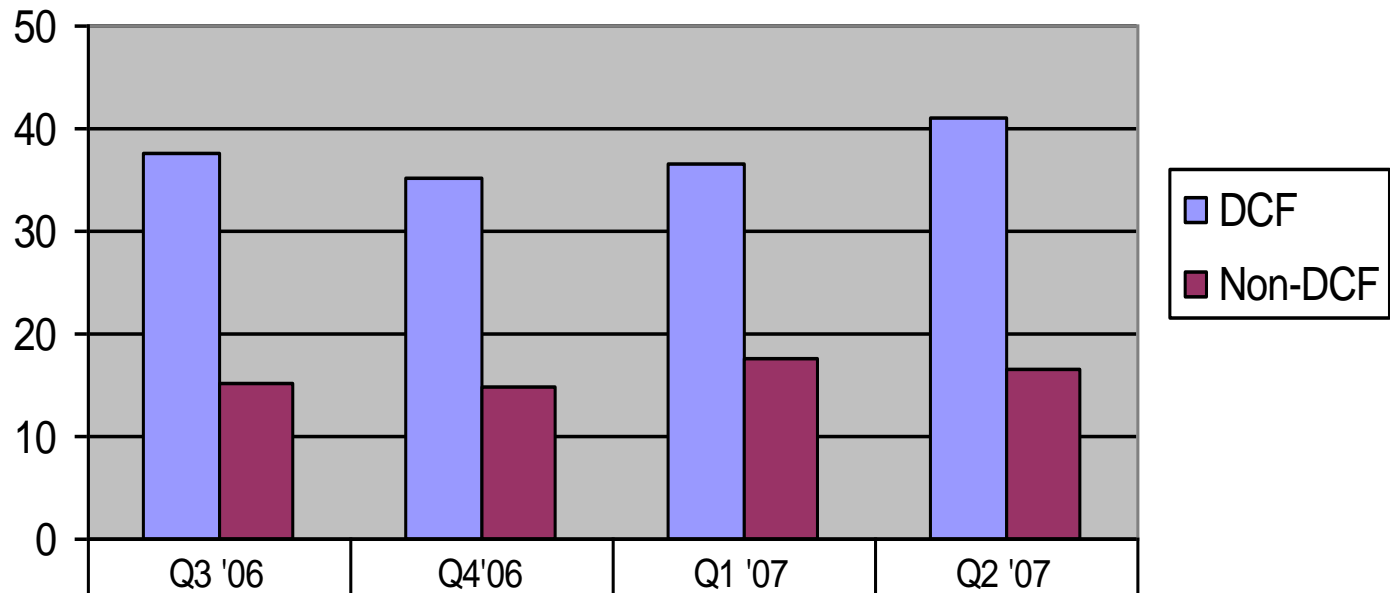


Days per 1000 for Inpatient Psychiatric LOC

Ages 0-18
IPF, IPM and OBS

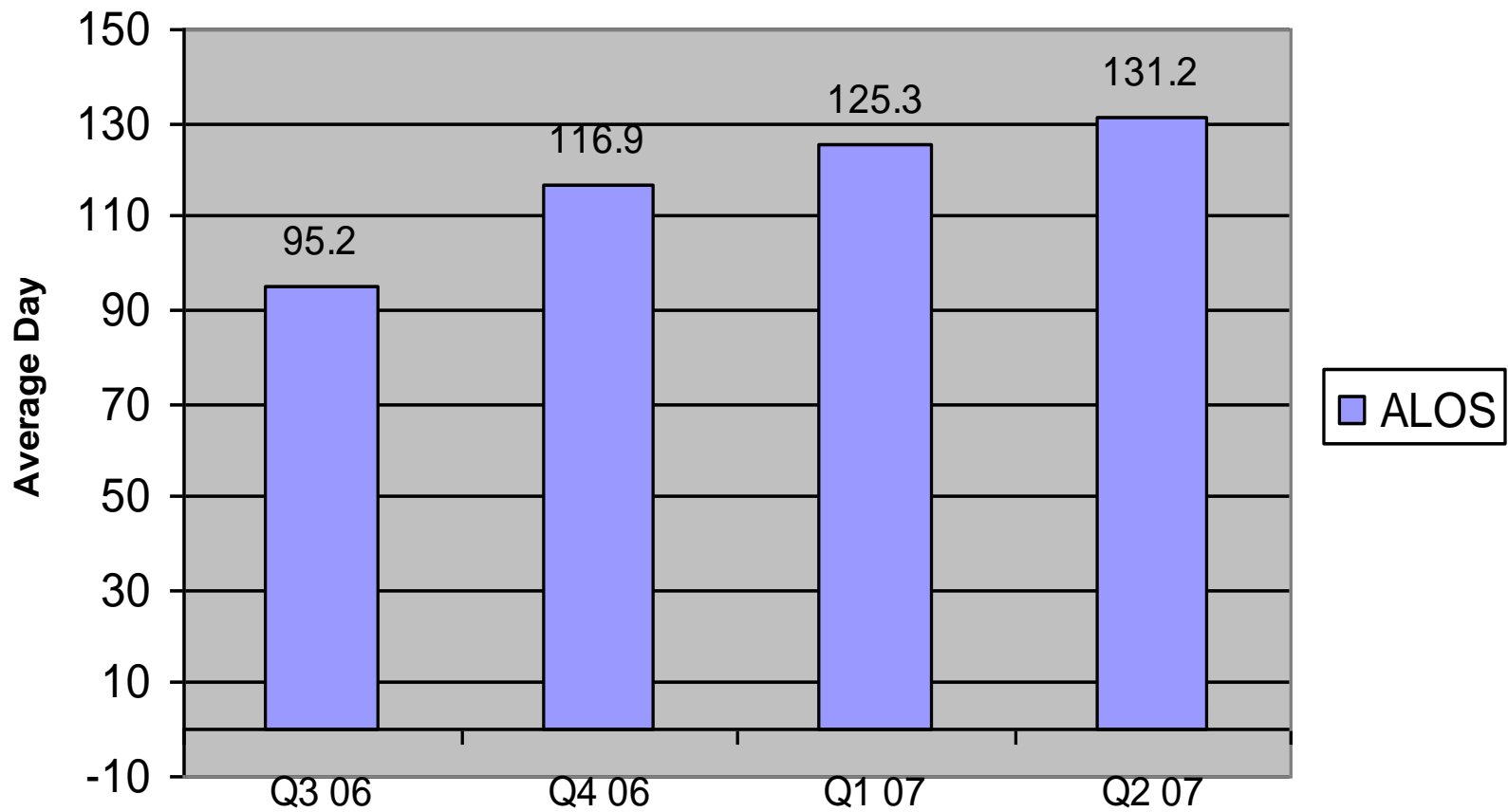


Average Length of Stay Children 0-18 DCF vs Non-DCF



DCF	37.7	35.3	36.6	40.9
Non-DCF	15.2	14.9	17.5	16.4

RIVERVIEW ALOS



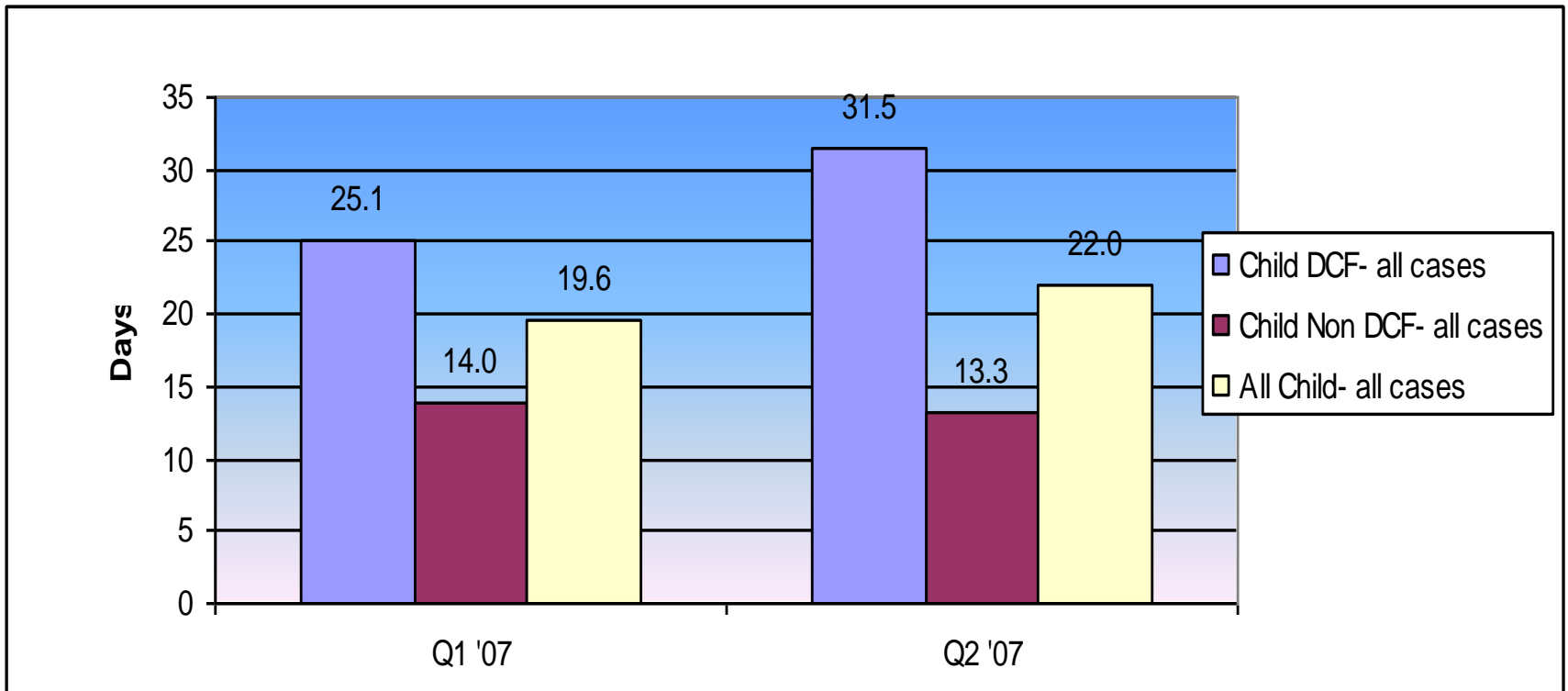
IMPACT OF RIVERVIEW DATA ON ALOS

- Number of discharges decreased from 39 to 32 over past few quarters.
- However, as we move further from implementation, the TRUE ALOS of Riverview cases is increasingly inflating the overall ALOS
- Recommendation: Moving forward, remove Riverview ALOS from reports

Quarter	Range of LOS	# of Cases >200 days	% Cases non-DCF	# of Discharges
Q3 06	14 - 179	0	15.3%	39
Q4 06	12 - 269	5	17.3%	35
Q1 07	22 - 355	8	16.3%	33
Q2 07	17 - 418	7	18.6%	32

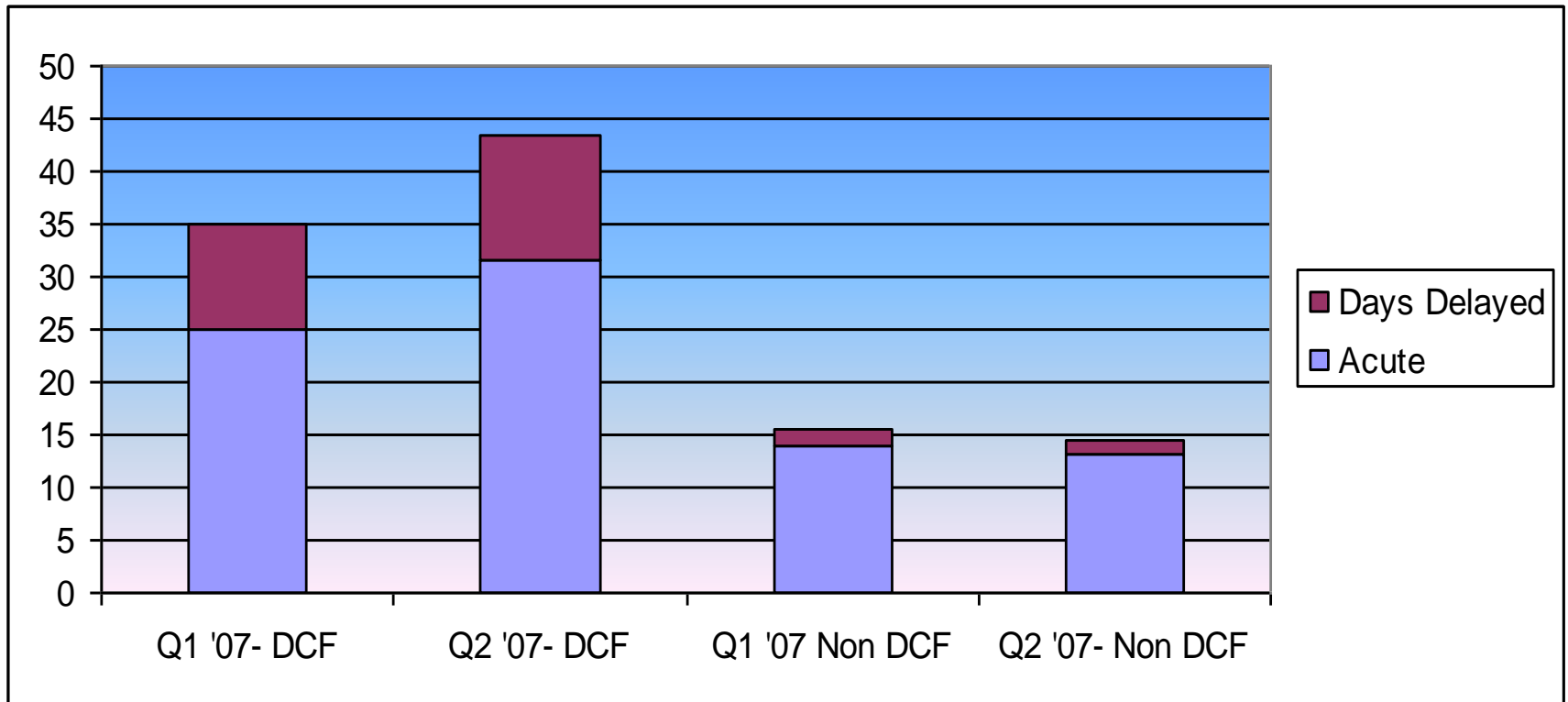
DISCHARGE DELAY

Average Acute Length of Stay DCF vs Non-DCF (All cases)



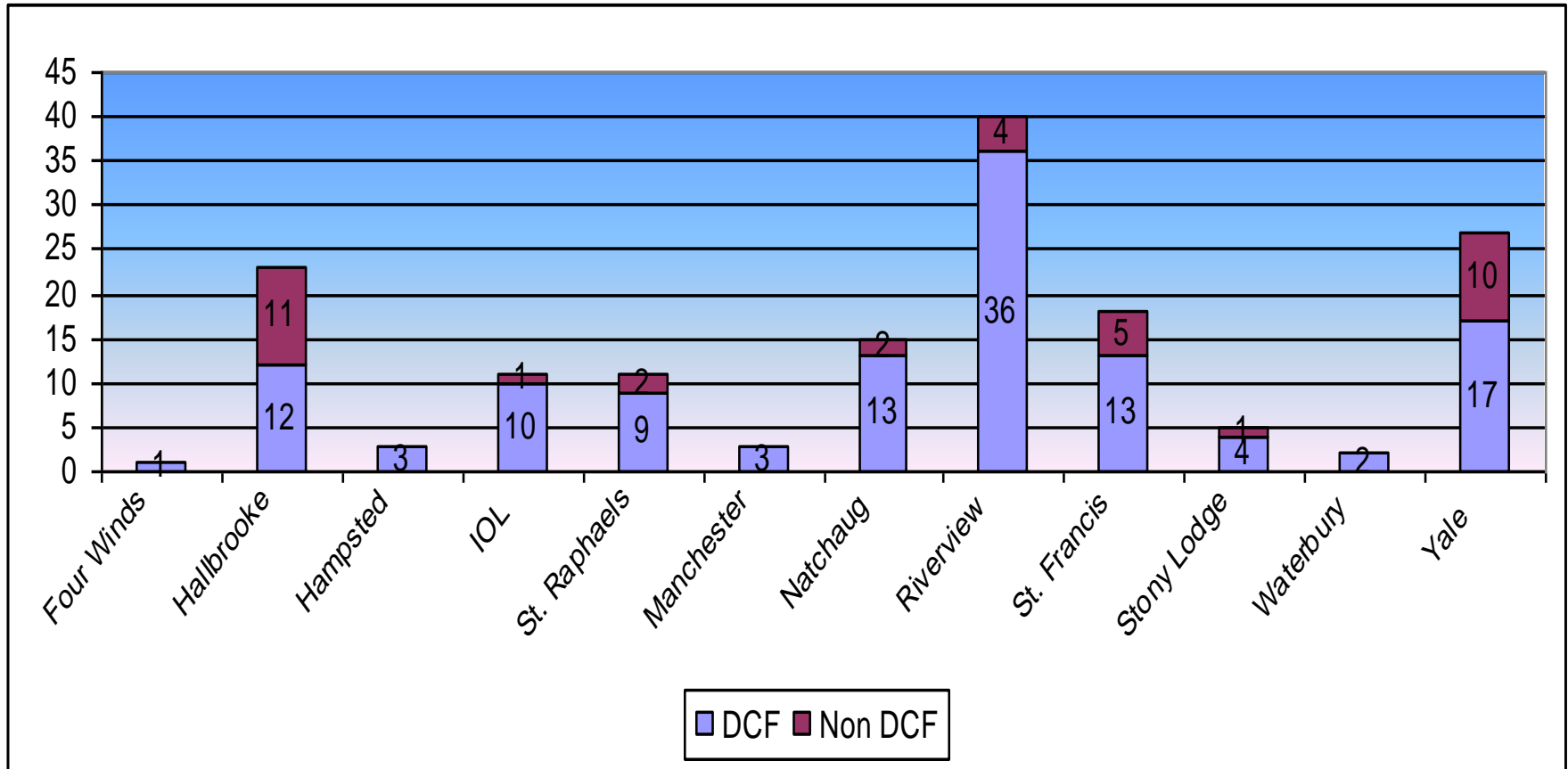
AVERAGE LENGTH OF STAY

Acute vs. Discharge Delayed
& DCF vs. Non-DCF (All Cases)



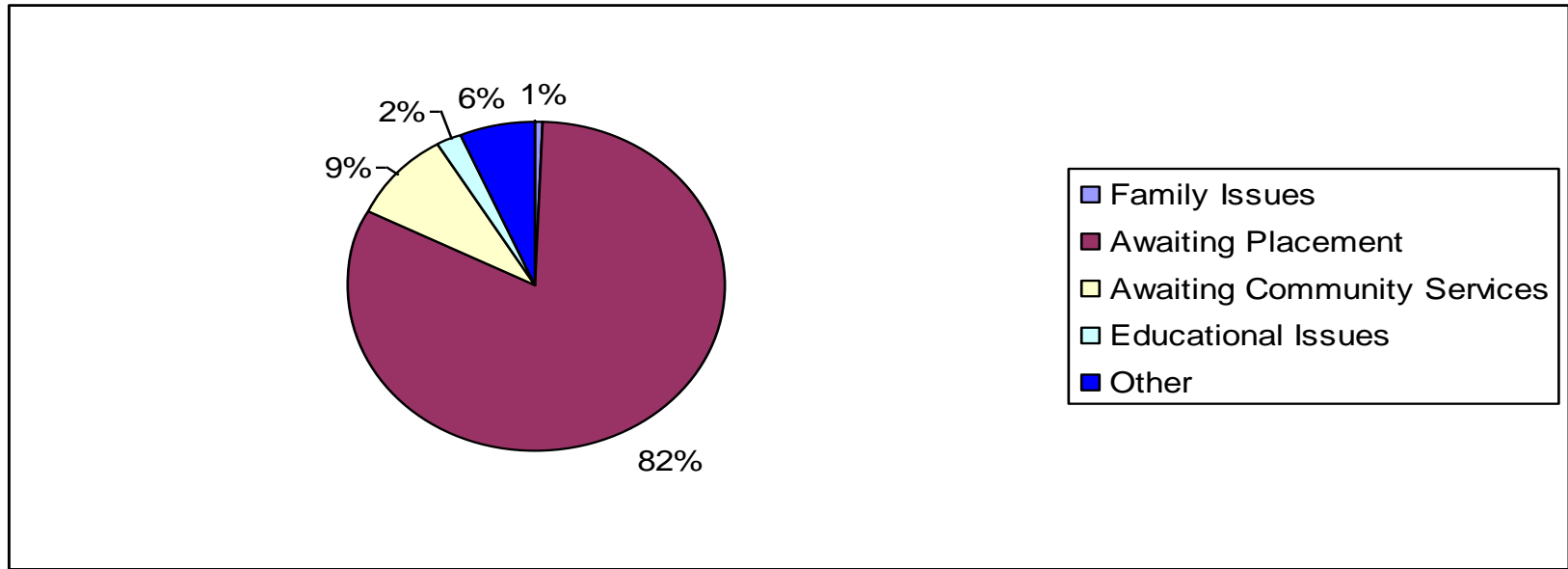
Number of DCF vs. Non DCF Children in Discharge Delay

Q2 '07



Discharge Delay Reasons by Code

Q2 '07

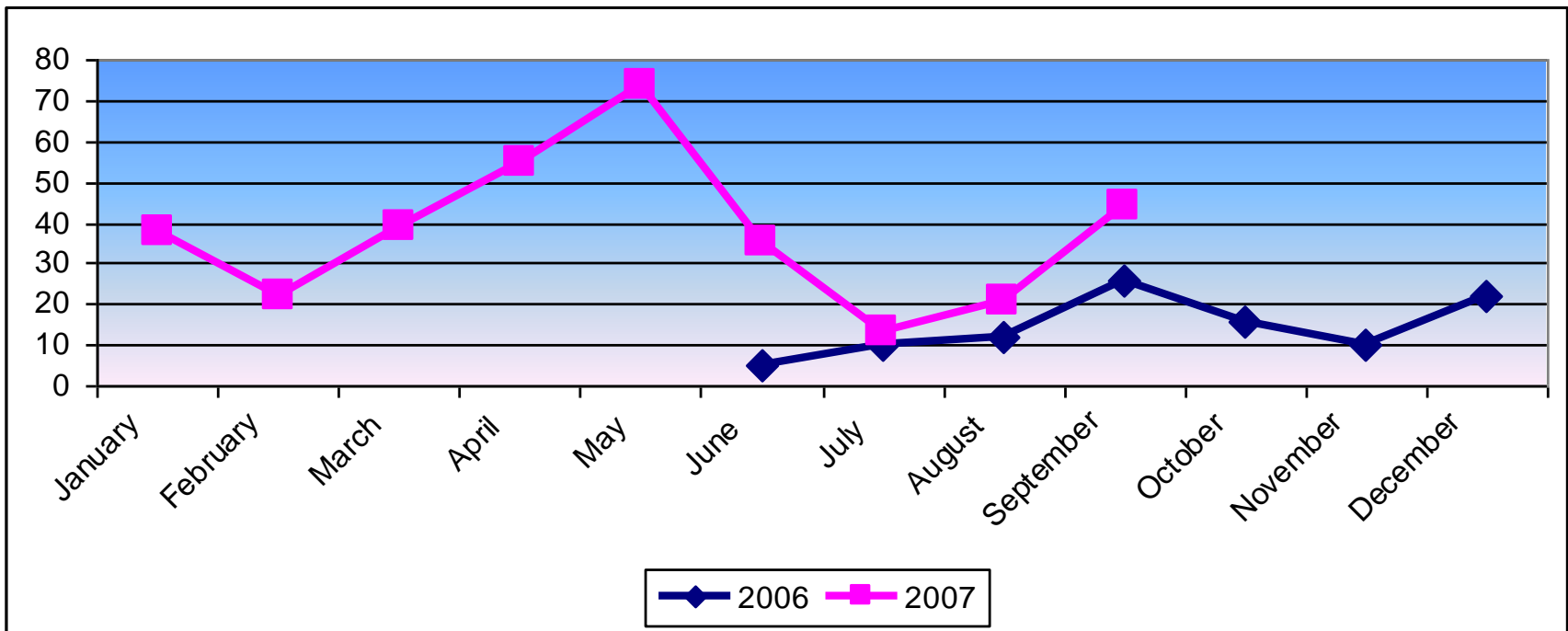


Most frequently awaited Community Services:

- IICAPS (9)
- FST (4)
- Home Health (3)

ED DELAY

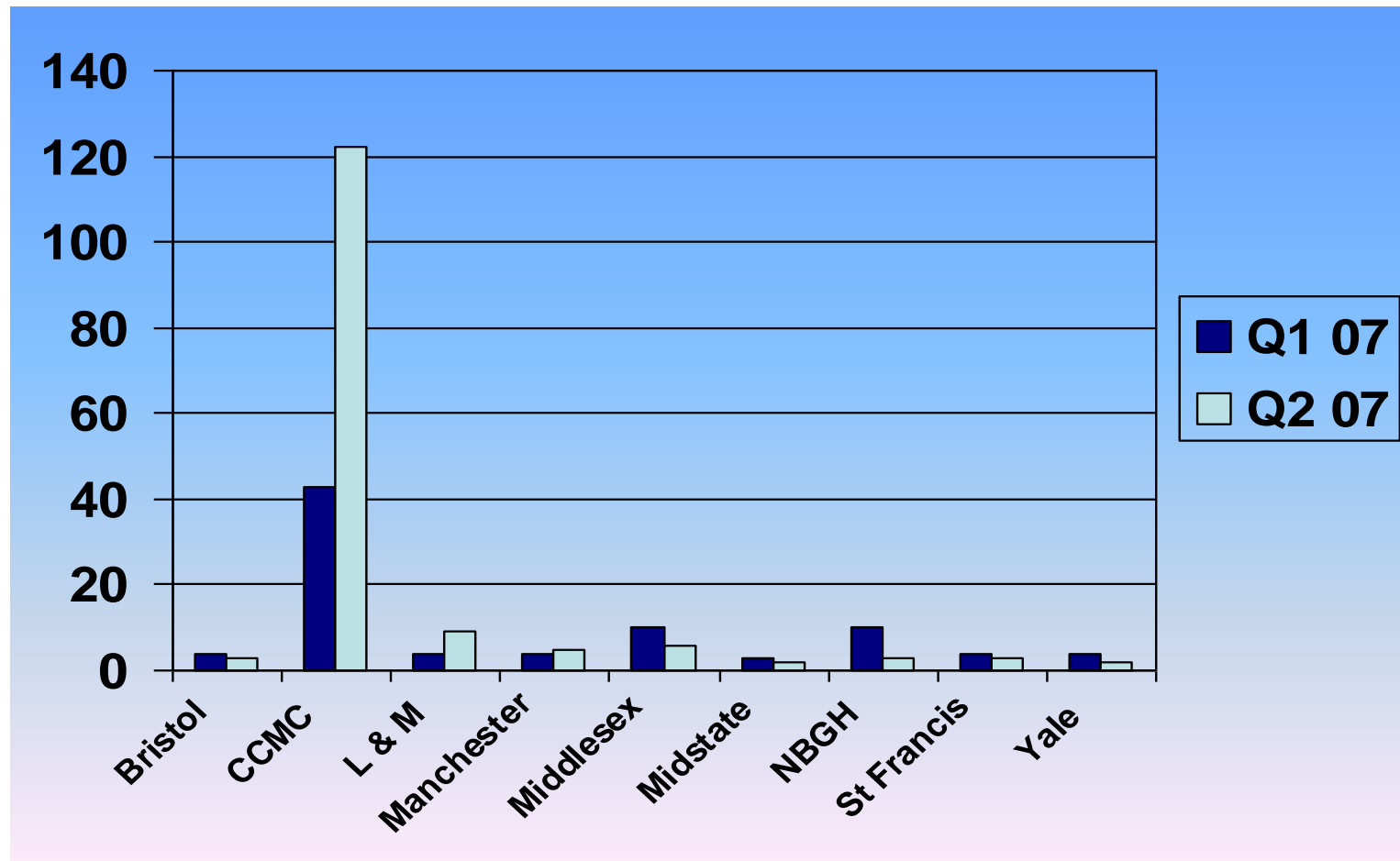
of Members in ED Delay Tracking Status Per Month



Children and Adolescents in the ED

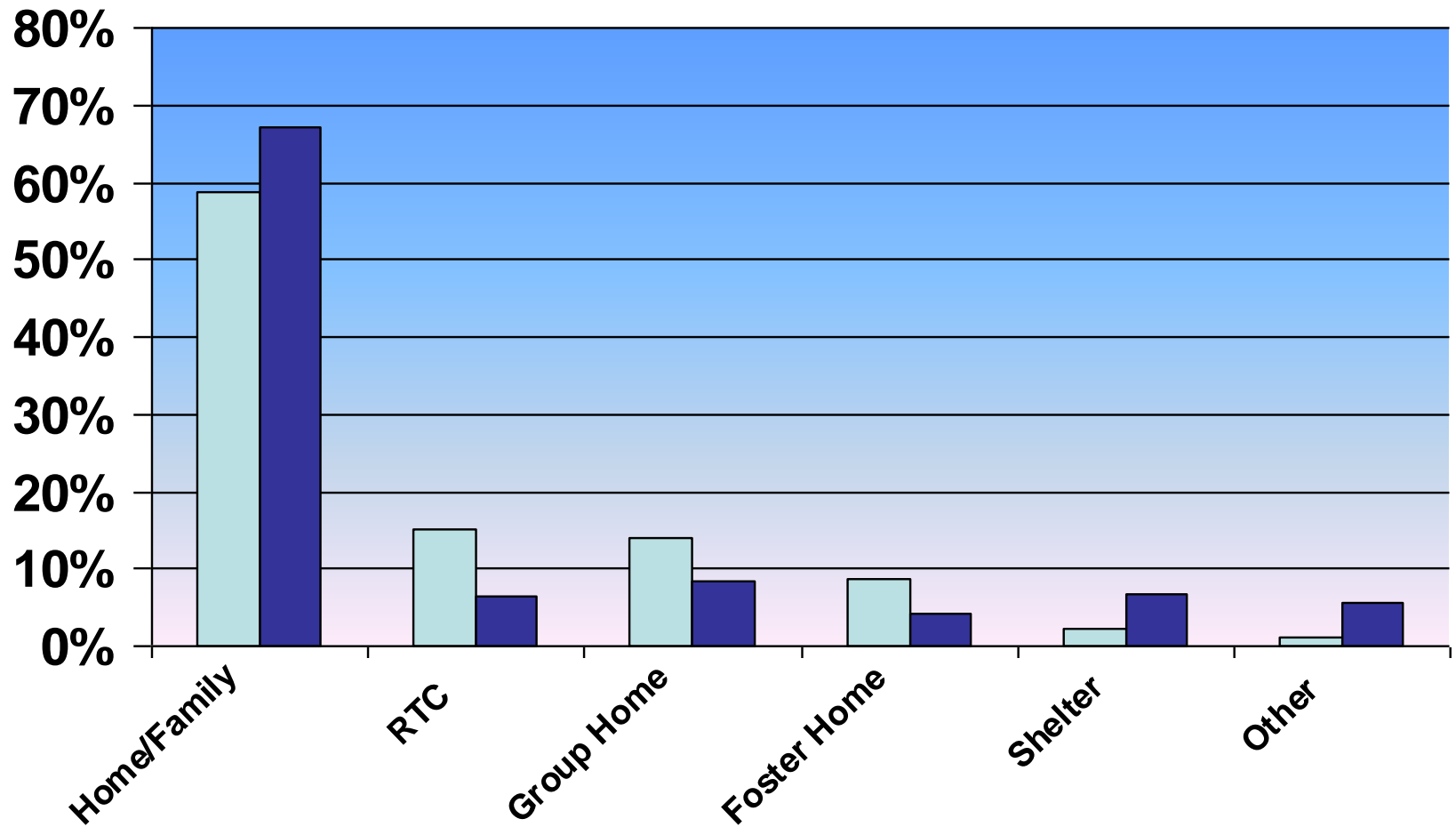
- In Q1 '07, 91 children and adolescents were delayed in the ED
 - 53% Female
 - Mean Age: 13.5
 - Range: 4-19
 - Mode: 15
 - Average Days Delayed: 2.8
- In Q2 '07, 187 children and adolescents were delayed in the ED
 - 59% Males
 - Mean age: 12.8
 - Range: 5-19
 - Mode: 14
 - Average Days Delayed: 2.5

Count of Children/Adolescents Delayed in ED



RESIDENCE PRIOR TO ED VISIT

Q1 & Q2 '07



Rate of Diversion to Community Services among Children Delayed in ED

